

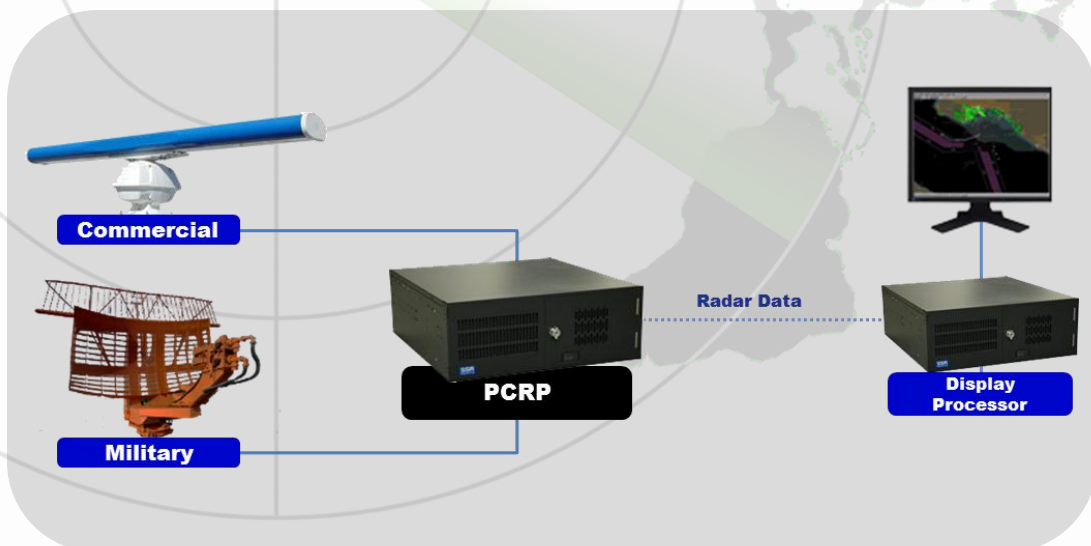
The *PCRP* is a high performance radar processor built upon proven COTS products in a flexible yet tightly integrated design. Fully compatible with multiple commercial and military X- and S-Band radar systems, the *PCRP* applies many standard and proprietary algorithms to the radar signal ensuring optimal target detection, enhancing the capabilities of any system, new or old.



Features of the PCRP include:

- ✓ Both Land-based and Shipboard Operation
- ✓ Functions as a Standalone or as a Component of an Integrated System
- ✓ Simplified Radar Control and Status
- ✓ Remotely Control Capability
- ✓ Enhanced Automatic Clutter Control
- ✓ Interfaces to Virtually Any Sensor
- ✓ Open API

System Overview



New System Installations - Legacy System Upgrades



Technical Data – PCRPs

Interface

Serial: Two (2)RS-232, Four (4) or Eight (8) RS-422 (optional)
 Sensors (Gyro and Speedlog): 1X/36X 60Hz/400Hz Synchro, Stepper
 (via optional Nav Interface Card)
 Data Output (Network): API via COMRIC
 Network: Ethernet 10/100/1000 Base-T
 I/O: Four (4) USB 2.0, One (1) each PS/2 connector, VGA, DVI

Environmental

Operating Temp: 0° to +55°C
 Non-Operating Temp: -40° to +85°C
 Humidity: 5% to 95% @40°C
 MTBF: 50,000 hours at 25°C

Supported Systems

Commercial

- ✓ Kelvin Hughes
Manta
SharpEye
- ✓ Furuno
21XX
1945
- ✓ Terma
Scanter 2001
- ✓ Raytheon
Pathfinder Mk-2
- ✓ Northrop Grumman
BridgeMasterE

Military

- ✓ SPQ-9B
- ✓ MK 92 with IFF
- ✓ SPS 73
- ✓ SPS 67
- ✓ SPS 55
- ✓ SPS 40
- ✓ SPS 48
- ✓ SPS 49
- ✓ TRS 3D
- ✓ TPS 42
- ✓ RADDs

Available Master PCRPs

Models	Description
201	Furuno 21x0/21x5 X-Band Control/Interface
202	Furuno 21x0/21x5 S-Band Control/Interface
203	Bridge Master E Control/Interface
204	Terma Scanter 2001 Control/Interface
205	Furuno Small Boat Radar Control/Interface
206	Pathfinder Mk-2 Control/Interface
207	Furuno 21x7 Control/Interface
209-S, -M	Kelvin Hughes SharpEye, Manta Control/Interface
273	AN/SPS-73 Processor Replacement, Control/Interface

SSR Engineering, Inc.
 2556 West Woodland Drive
 Anaheim, California 92801
 Tel +1.714.229.9020
 Fax +1.714.229.9015
 Email info@ssreng.com
 www.ssreng.com

